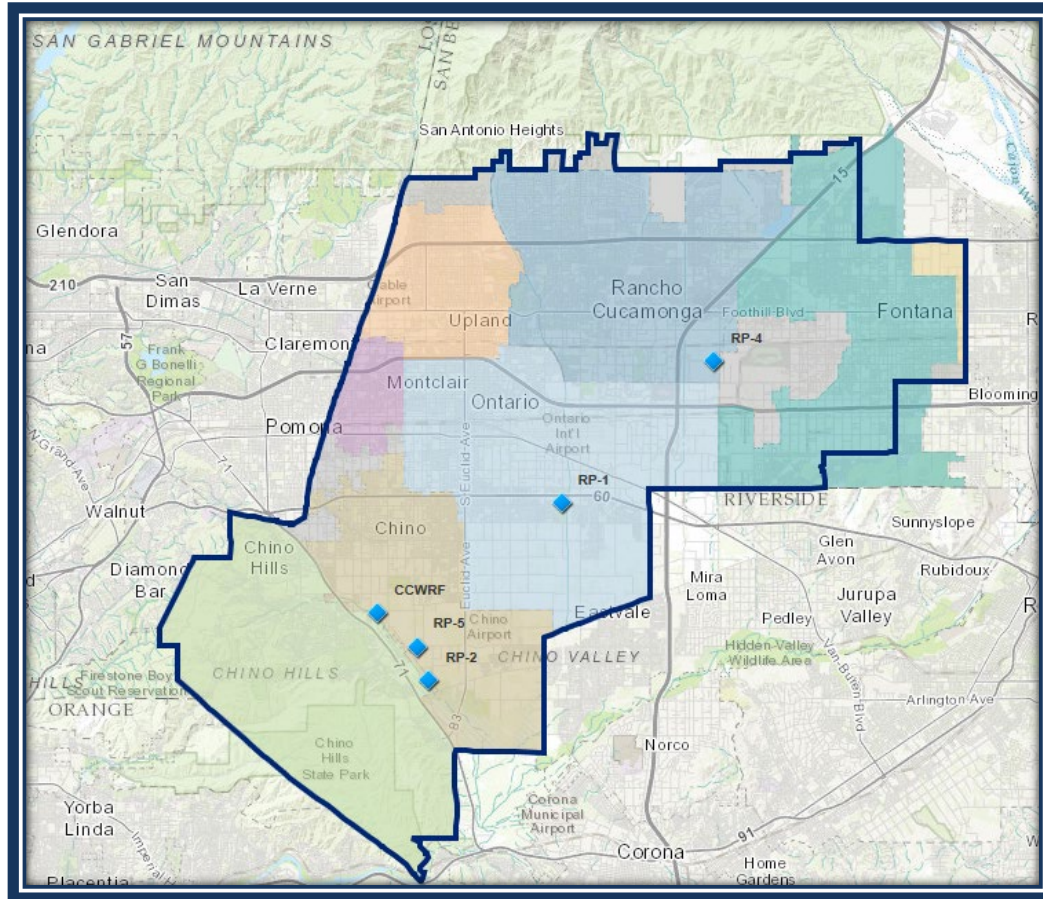


# Overview of the Inland Empire Utilities Agency for ASERSA



Shivaji Deshmukh, P.E.  
General Manager

# About IEUA...



- Located in the southwestern portion of San Bernardino County
- 875,000 residents in our service area
- 242 – square miles
- Contracting and retail agencies:
  - City of Chino
  - City of Chino Hills
  - Cucamonga Valley Water District
  - City of Fontana
  - City of Montclair
  - City of Ontario
  - City of Upland
  - Fontana Water Company
  - Monte Vista Water District

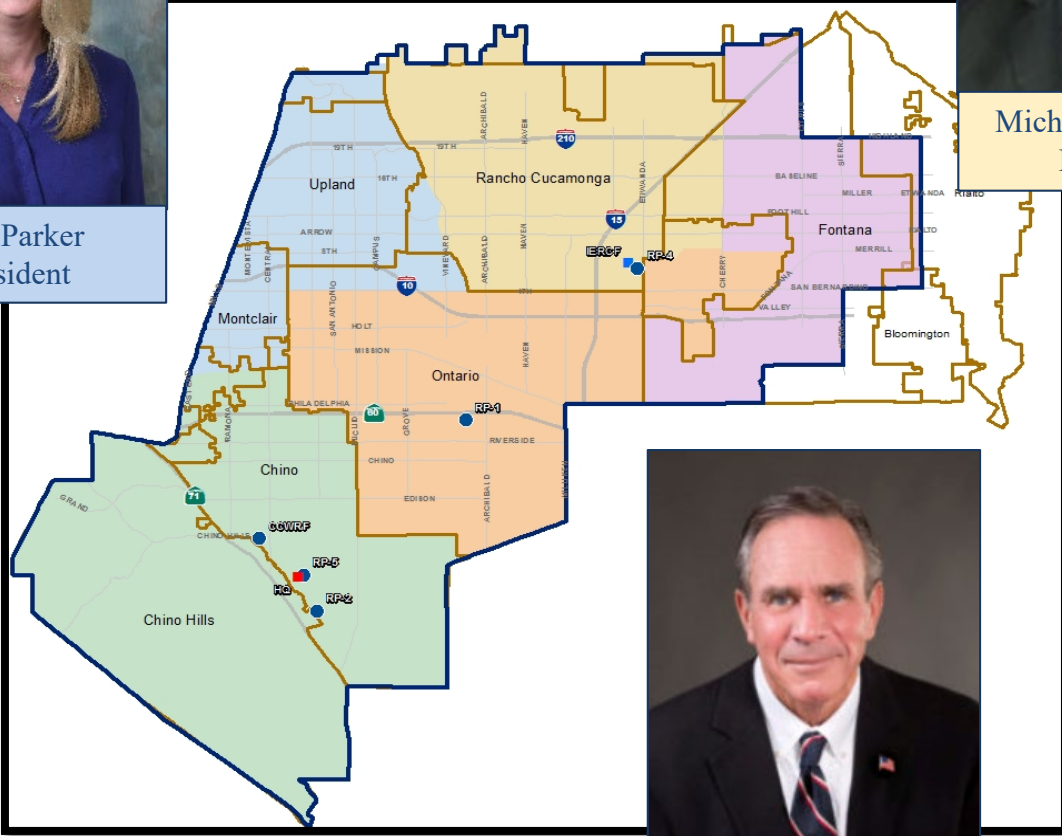
# Board of Directors



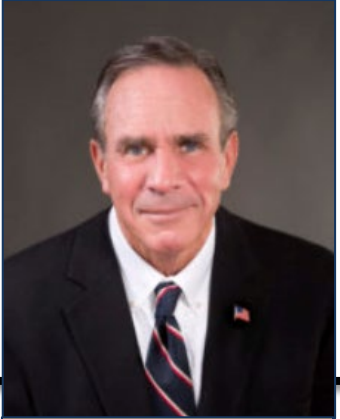
Kati Parker  
President



Michael Camacho  
Director



Steven J. Elie  
Secretary/Treasurer



Paul Hofer  
Director



Jasmin A. Hall  
Vice President



# Regional Partnerships and Collaborations

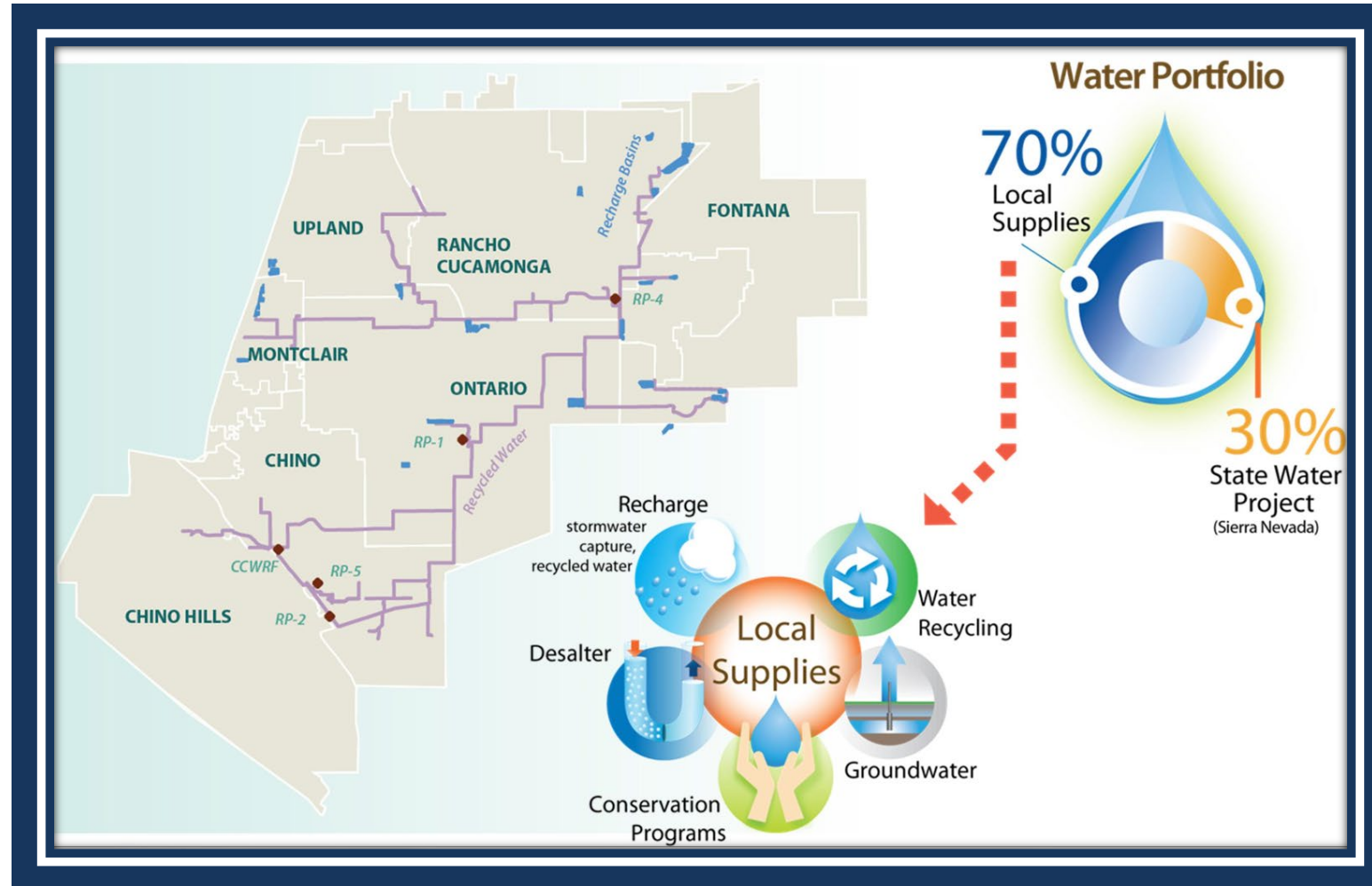


# Major Programs

Innovation at its best!

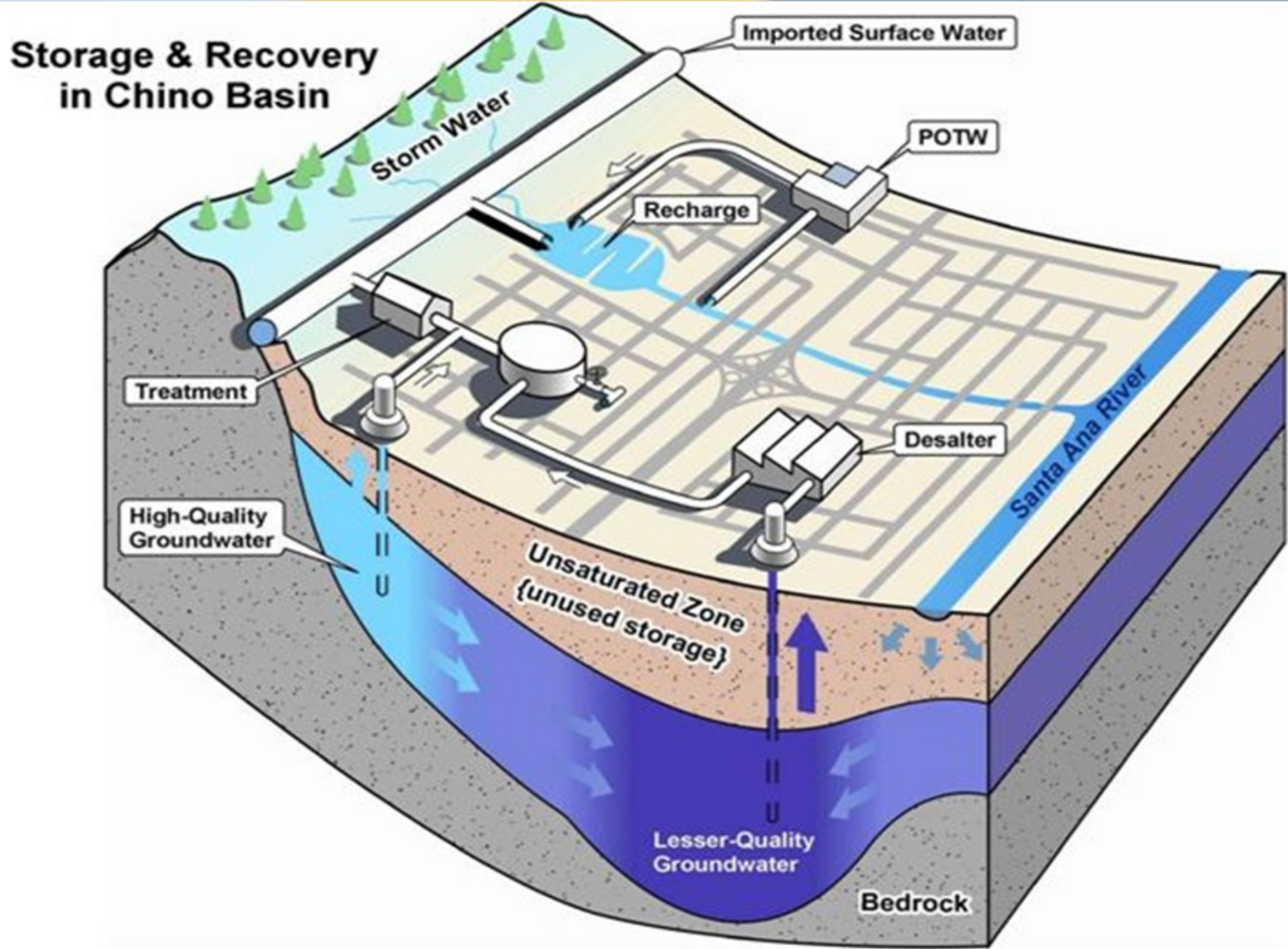
						
Composting (IERCF)	Wastewater Treatment	Water Supply	Renewable Energy	Recycled Water Supply & Distribution	Groundwater Recharge	Water-Use Efficiency

# Regional Water Portfolio



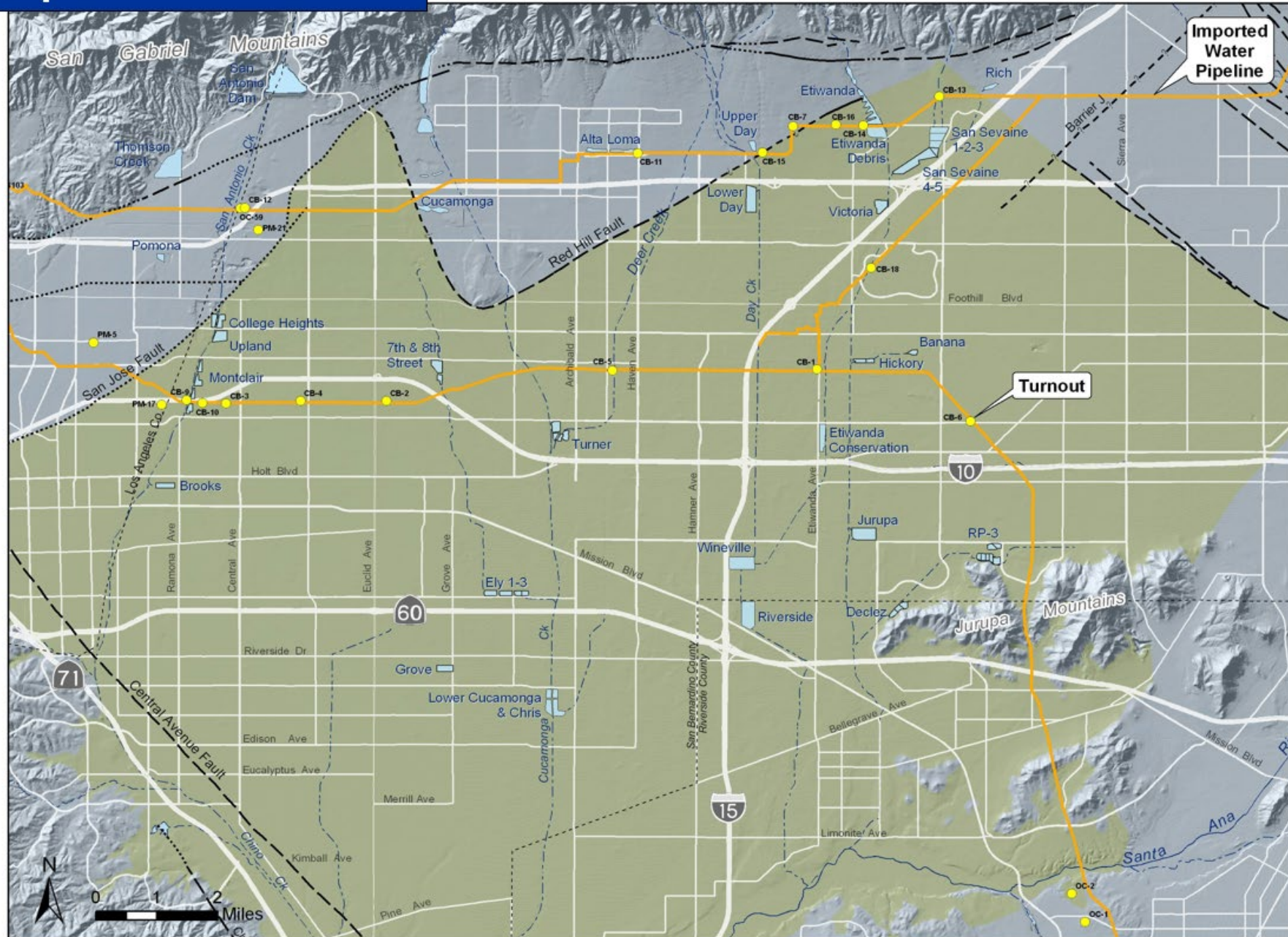


# Chino Basin ... Integration of Programs





# Imported Water Facilities



Figure\_2-1\_PP.mxd



# Chino Basin Water Resources

1950

Population of 80,000

Regional Water Portfolio:

- Chino Basin Groundwater
- Creek Water
- MWD Imported Water

2020

Population of 875,000

Regional Water Portfolio:

- Chino Basin Groundwater
- Creek Water
- MWD Imported Water
- Recycled Water
- Chino Basin Desalter
- Conservation
- Groundwater & Stormwater Recharge

# Water & Wastewater Operations

- Wholesale Imported & Recycled Water
  - 32,000 acre-feet of recycled water
  - 60,000 acre-feet of imported water
- Wastewater Treatment
  - 60 million gallons per day
- Highest flow day:  
**Super Bowl Sunday!**
- 5 Treatment Facilities



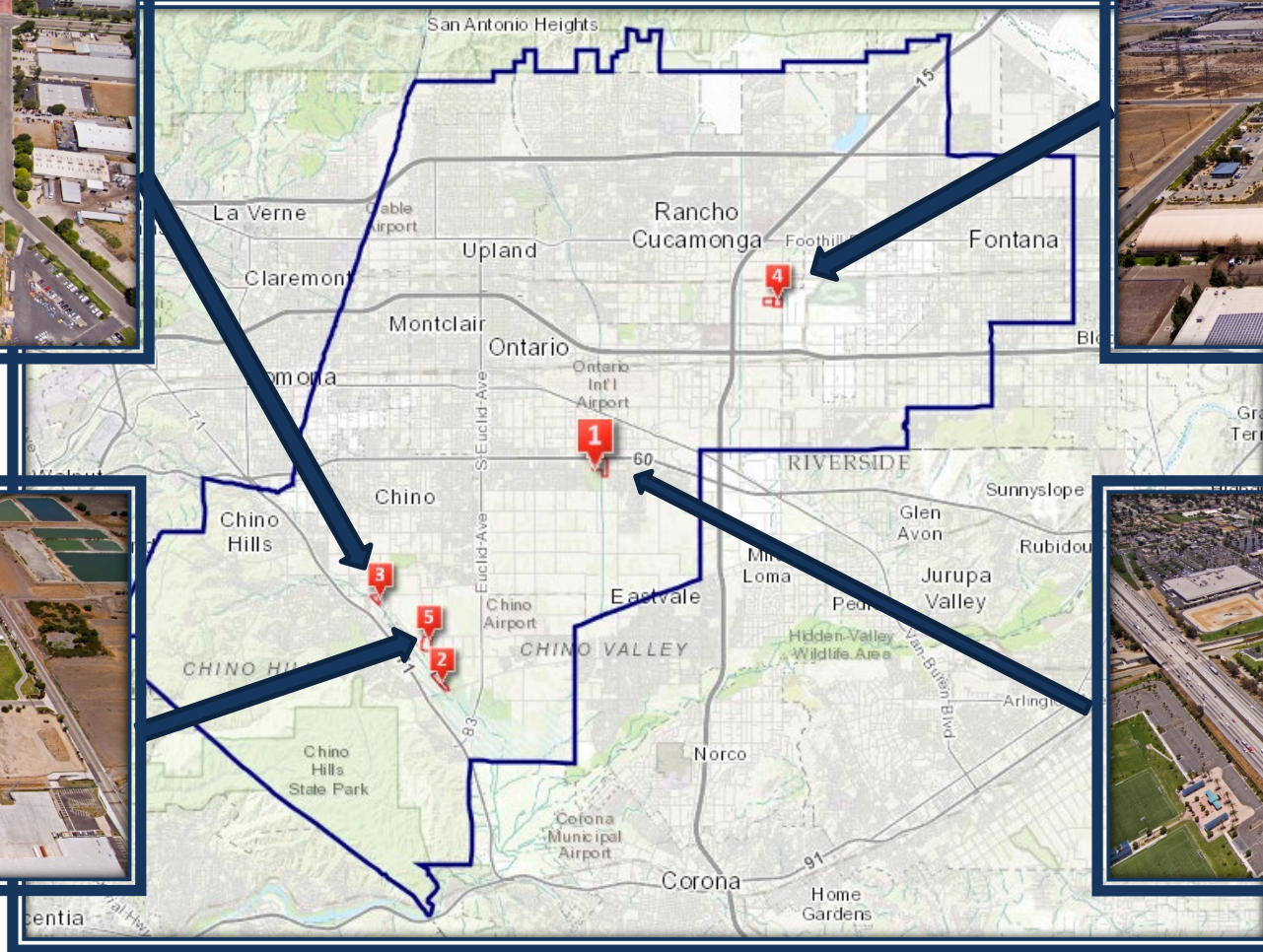
**FACT: One acre-foot is enough water to provide to two families of four for an entire year.**



# Regional Water Recycling Plants



**CCWRF**



**RP-4**



**RP-5**



**RP-1**



# Recycled Water

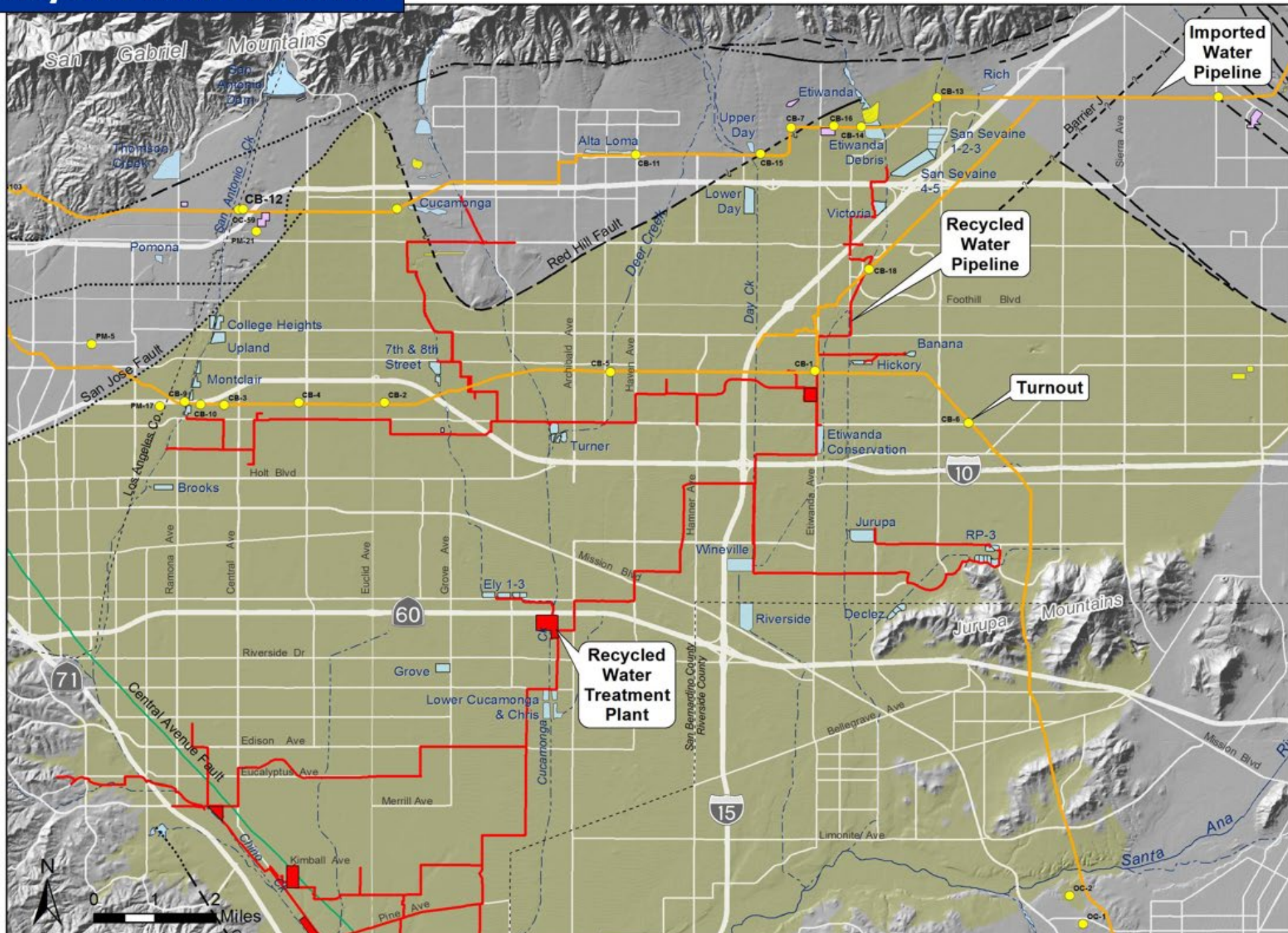
*Not impacted by climate.*

- Highly treated recycled water is the only new major source of water available to meet southern California's growing water demand.
- To date, **IEUA has more than 850 connections** to the recycled water distribution system for irrigation and industrial uses.
- Recycled water makes up roughly **17 percent** of the water supply for the region.
- **SOME OF THE APPROPRIATE USES FOR RECYCLED WATER INCLUDE:** Irrigation, landscaping, golf courses, farms, industrial cooling, parks, cemeteries, construction, recreational lakes, groundwater recharge, industrial processing, median strips.

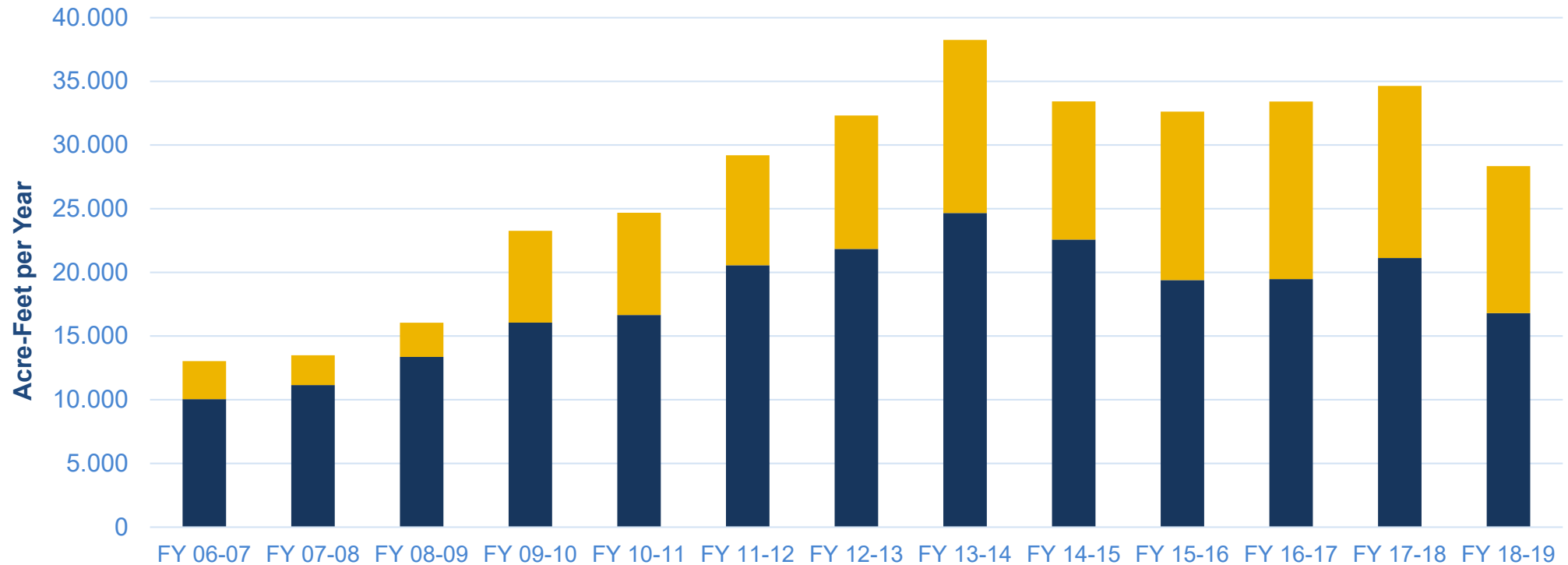




# Recycled Water Facilities



# Recycled Water Deliveries

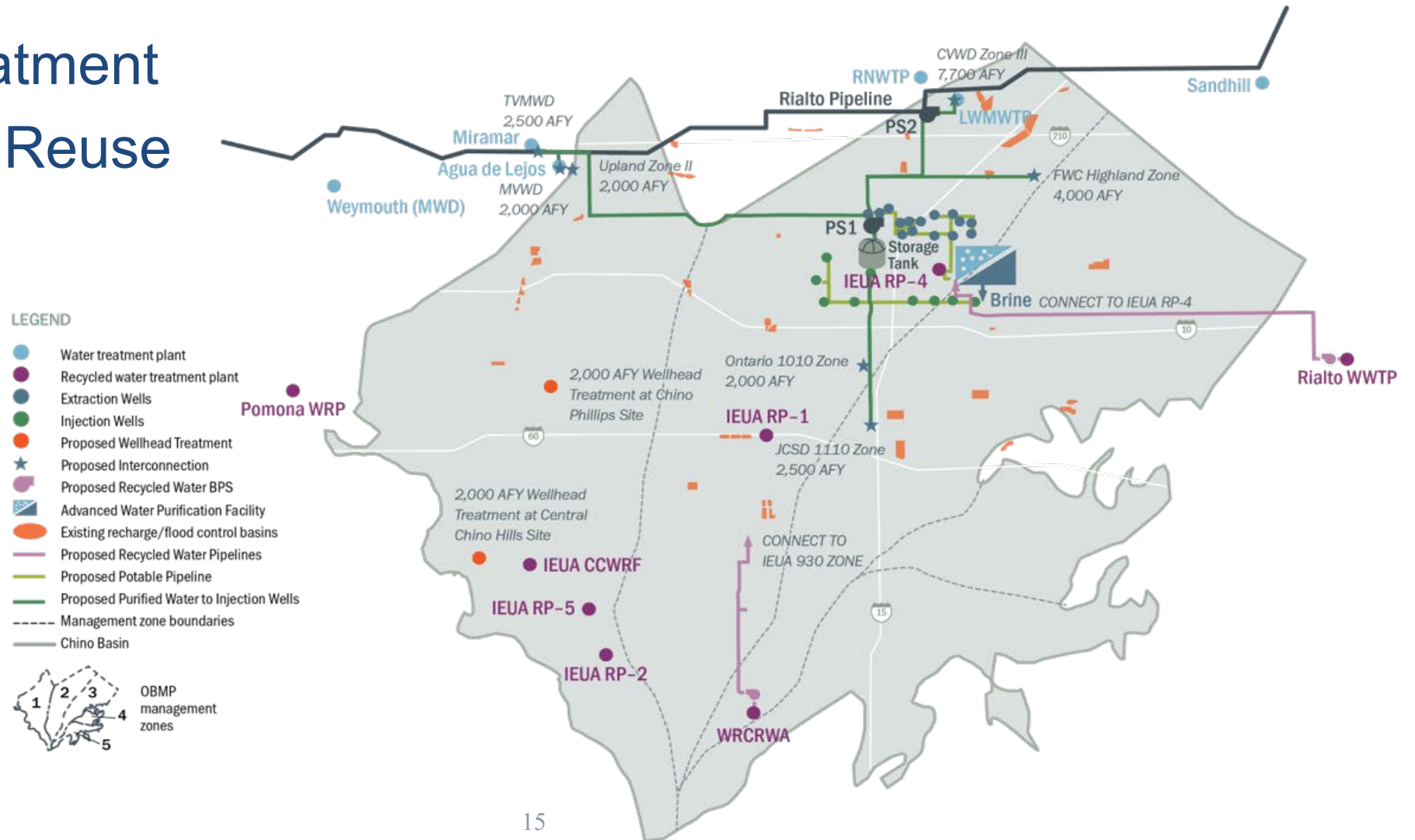


<b>Direct</b>	<b>10,048</b>	<b>11,153</b>	<b>13,361</b>	<b>16,057</b>	<b>16,656</b>	<b>20,556</b>	<b>21,840</b>	<b>24,659</b>	<b>22,850</b>	<b>19,397</b>	<b>19,477</b>	<b>21,132</b>	<b>16,803</b>
<b>GWR</b>	<b>2,981</b>	<b>2,340</b>	<b>2,684</b>	<b>7,208</b>	<b>8,028</b>	<b>8,634</b>	<b>10,479</b>	<b>13,593</b>	<b>10,840</b>	<b>13,222</b>	<b>13,934</b>	<b>13,510</b>	<b>11,542</b>
<b>Total</b>	<b>13,029</b>	<b>13,493</b>	<b>16,045</b>	<b>23,265</b>	<b>24,684</b>	<b>29,190</b>	<b>32,319</b>	<b>38,252</b>	<b>33,690</b>	<b>32,619</b>	<b>33,411</b>	<b>34,642</b>	<b>28,345</b>



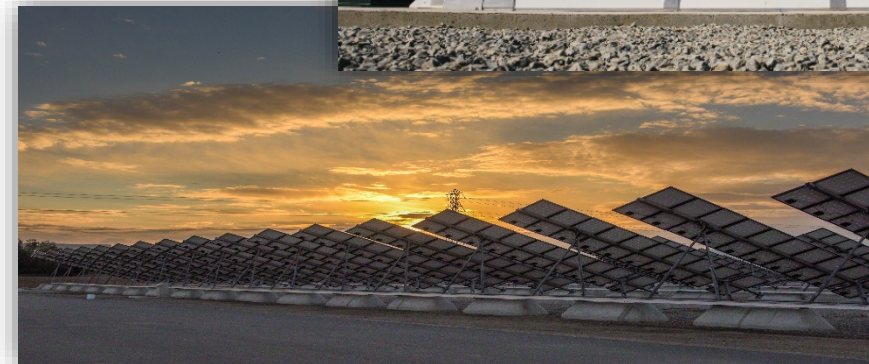
# Future of Recycled Water

- Advanced Treatment
- Direct Potable Reuse



# Energy Management Plan (EMP)

- Water and energy are inextricably connected
- EMP Goal: **Energy independence** during peak energy price period and **carbon neutral** by 2030
- 80% of peak energy from renewable energy sources
- Energy accounts for 25% of non-labor operation and maintenance costs ... **Highest non-labor cost**
- Portfolio: Solar, Wind Turbine, Co-generation and Food Waste = 9 MW
- Battery storage = 4 MW





# Community Outreach and Education

- Campaigns
- Residential Landscape Training Workshops
- Rebate Programs
- Garden in Every School<sup>®</sup>
- National Theatre for Children
- Water is Life Student Art/Poster Contest
- Water Discovery Field Trip Program
- Chino Creek Wetlands & Educational Park
- Earth Day
- Solar Cup



 **Kick the Habit**   
don't waste water

WARNING: Failure to reduce water use will impact future generations

[KickWaterWaste.com](http://KickWaterWaste.com)



# Contact Us

 – (909) 993-1600

 – [info@ieua.org](mailto:info@ieua.org)



Visit our website: [www.ieua.org](http://www.ieua.org)



 [IEUAWater](https://www.youtube.com/IEUAWater)

